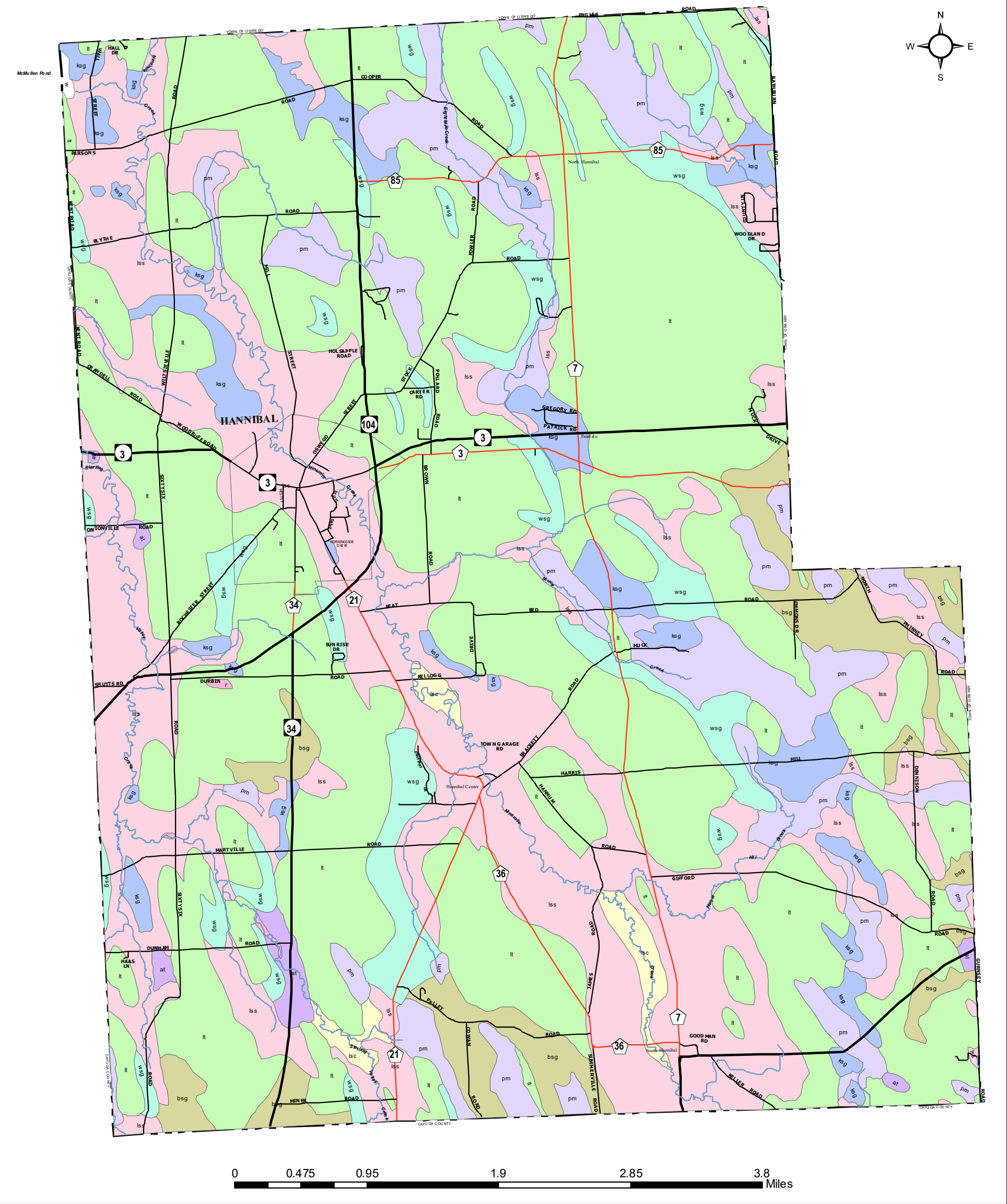


Town of Hannibal, NY
Comprehensive Plan
Surficial Geology

Plate #1



Created by:
Oswego County Community Development, Tourism & Planning
46 East Bridge Street
Oswego, NY 13126
(315)349-8292
Karen.Noyes@OswegoCounty.com
For: Town of Hannibal
Date: May 10, 2019

Source: Surficial Geology Quadrangle Maps, USGS, 1982

- lss: Lake silt and fine sand; offshore deposits in proglacial or postglacial lakes; thin bedded to massive; low to moderate permeability. Poor to moderate potential for well yields.
 - lsc: Lake silt and clay; offshore deposits in proglacial or postglacial lakes; thin bedded to massive; low permeability. Poor to moderate potential for well yields.
 - bsg: Beach sand & gravel; coarse sand and gravel deposited near shore or at shoreline of proglacial or postglacial lakes; well sorted; unconsolidated and highly permeable.
 - ksg: Kame & kame terrace sand and gravel; coarse sand to cobble gravel distributed on a glacier and later deposited on ground as ice melted; some sorting; unconsolidated except for some secondary calcite cementation; highly permeable. Good potential for well yields.
 - wsg: Wave delta sand & gravel, sand to cobble gravel deposited by waves.
 - lt: Lodgement till; mixture of clay, silt, sand and boulders deposited at base of glacier; poorly sorted; compact and impermeable. Poor potential for well yields.
 - pm: Peat, marl, muck and clay; bog deposits of postglacial to recent time. Unsuitable for well construction and commonly contains iron-bearing water.
 - r: Bedrock; sedimentary rocks. Low to moderate potential for well yields. The extent of fractures and joints is predominant factor determining potential for well yields.
 - at: Ablation till; mixture of clay, silt, sand, and boulders deposited from drift laid down after ice melted beneath it; unconsolidated; noncompact and generally has a slightly coarser texture than lodgement till; variable permeability. Poor to moderate potential for well yields.
- Town of Hannibal Municipal Boundary

Note: This information is intended for general planning purposes only.