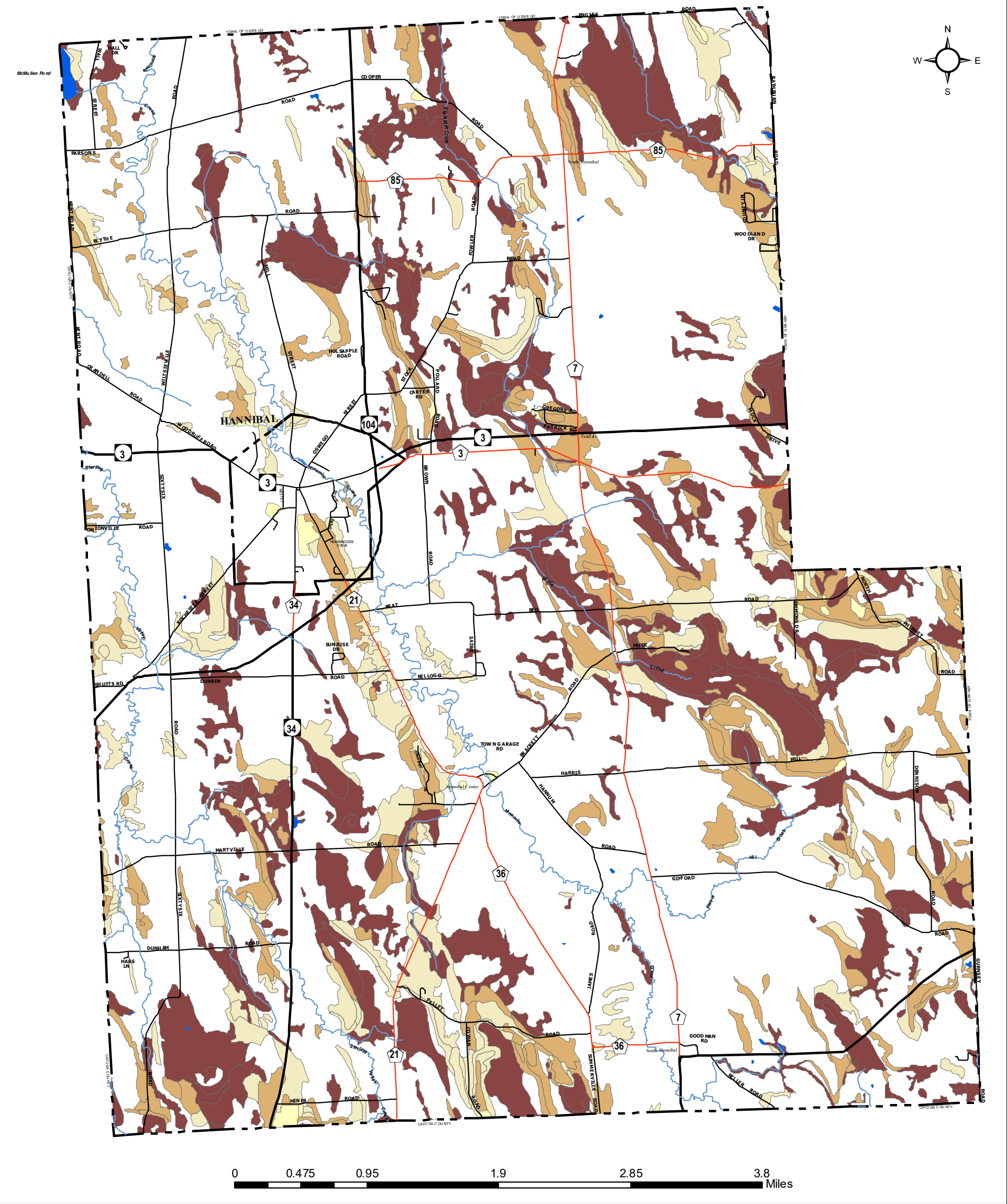



Town of Hannibal, NY
Comprehensive Plan
Soil Limitations for On-Site Sanitary Disposal Systems

Plate #3





Created by:
Oswego County Community Development, Tourism & Planning
46 East Bridge Street
Oswego, NY 13126
(315)349-8292
Karen.Noyes@OswegoCounty.com
For: Town of Hannibal
Date: May 10, 2019

Source: Oswego County Soil Survey, 1980

Soil Suitability for On-Site Sanitary Disposal Systems

- Water
- Not Applicable: (Gravel Pits, Sand Dunes, Cut & Fill, Made Land)- On-Site Evaluation Required
- Probable Limitations Due to Excessive Drainage: May Lead to Groundwater Contamination- Professionally Engineered Systems Probably Required
- Possible Limitations- Conventional Systems Generally Suitable
- Most Severe Limitations Due to Slow Permeability &/or High Watertable- Generally not Suited for On-Site Systems
- Probable Limitations Due to Slow Permeability, High Watertable, Slope or Other Factors- Professionally Engineered Systems Probably Required

NOTE: This information is intended for general planning purposes only.